

The System range has been developed following extensive consultation with architects, leisure specialists and independent design consultants to provide an exceptional product to meet the aesthetic and performance criteria demanded by today's forward-looking market.

System 2000 - plant on doors

System 2000 provides a package where good looks can be achieved within a budget, without sacrificing strength and security. The package is suitable for both wet or dry area use.



Features

- Frame and body assembly: unique extruded doorframe uprights are formed from heavy gauge aluminium. Rounded profile allows easy bag deposit and removal
- Doors manufactured from Solid Grade Laminate (SGL)
- Curved single piece body shell is hygienic and user-friendly with no sharp edges or dirt trap corners
- Shelves formed from polypropylene or aluminium for strength and security
- Hinges: strong, heavy-duty, full-length hinge assembly built into locker frame provides a high level of security. Plastic shrouding maintains tidy appearance while automatic door closure reduces risk of injuries
- 300mm and 400mm wide door options available as standard
- Available up to 600mm wide and 600mm deep

Lock detail

- Secure, coin-operated locks
- Accepting any coinage
- Coin-collect or refund
- Master keyed
- Available with high quality cam lock (non-coin)
- Optional removable cylinder
- 'Hook bolt' design gives engagement into door frame providing additional security
- Half-height unit available see pg 6
- Locker produced with 'plant on' doors fitted to a high specification aluminium doorframe giving a clean uninterrupted wall of colour
- RFID proximity lock



System 2200 - inset doors

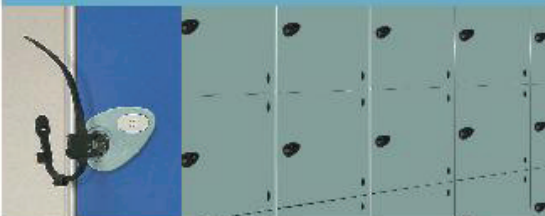
System 2200 is suitable for wet or dry area use with extruded anodised aluminium door frame uprights and a single piece curved aluminium body. The 'inset' style door provides a visual contrast to the frame structure.



Lock detail

- Secure, coin-operated locks
- Accepting 20p, 50p, £1, £2 tokens and Euro coinage
- Coin-collect or refund
- Master keyed
- Available with high quality cam lock (non-coin)
- Optional removable cylinder
- 'Hook bolt' design gives engagement into door frame providing additional security
- Half-height unit available, ideal for special needs
- Locker produced with inset doors fitted in to a high specification aluminium doorframe giving a very high level of strength and security
- 300mm and 380mm wide door options available.
- LogicLock is available with this product, see page 11

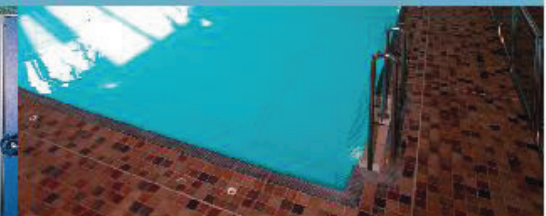
4



2000 Specials
To meet the demand for larger locker compartments the system 2000 range is now available up to 600mm wide x 600mm deep.



5



Cubicles and Complementary Products

Changing and W.C. cubicles, vanity units, panelling systems and radiator casings are all manufactured cost effectively and combine design with durability.

- Vanity units – Laminated, solid surfacing, quartz stone, granite and marble, solid grade laminate, glass.
- Duct and wall panelling
- Integrated seating
- Column and radiator casings

Walk-thru Cubicles

Our unique walk-thru cubicle does exactly what the name suggests. It enables the leisure user to move from the dry to wet side and vice versa. Once inside and on locking the door entered, the locking mechanism also locks the exit door.

(UK Patent Pending No. 0315150.3)



Anti Peep

In changing villages, the patented anti peep design above the seating and across the top of the cubicles, is a deterrent for unsocial behaviour. (Registered Community Design No. 000442702.0001)



Aqua-Static Range (top)

- Designed to cope with the rigours of high use public change areas
- Fully framed extruded aluminium system
- Full length door hinge pivoted both top and bottom incorporating anti-finger trap design
- Solid phenolic laminate panels.

Front-Line Range (bottom)

- High performance system at an affordable price
- Secure through fixed hardware
- Smooth profiled safe exposed edges and corners
- Solid phenolic laminate panels.

Sublime Range (top)

- Designed to achieve a distinctive, solid luxury appearance
- High pressure laminate throughout, providing overall thickness of 20mm partitions/doors and 38mm postformed pilasters
- Hardware finish – brushed satin stainless steel 304 grade
- Easily integrated within a washroom environment.

Eco-Line Range (bottom)

- A range of flexible, good quality and economical systems incorporating a choice of panels, hardware and edges
- Lower cost, quality design
- Edge options include 2mm high impact PVC, extruded aluminium channels or postformed pilasters
- Moisture resistant substrates.

Ultra-Line Range (top)

- Unique curved aluminium plasters
- Suitable for 12-13mm, 19-20mm panels and 10mm toughened safety glass
- Hardware finish – textured metallic and smooth polyester powder coated, highly polished brightened aluminium or brushed stainless steel
- Outward opening door option.

